



PLASTIC BAN

**GOVERNMENT COLLEGE JAITHARI,
DISTRICT- ANUPPUR (M.P.) INDIA**

POLICY

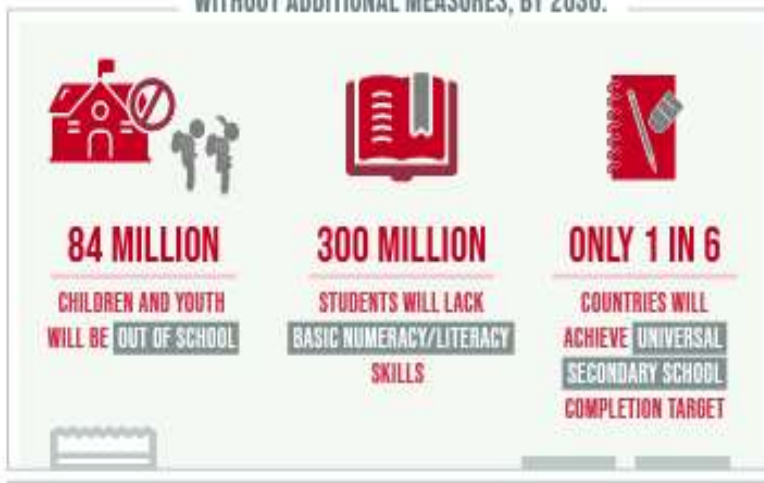


ENSURE INCLUSIVE AND EQUITABLE QUALITY EDUCATION AND PROMOTE LIFELONG LEARNING OPPORTUNITIES FOR ALL

DESPITE SLOW PROGRESS,

THE WORLD IS FALLING FAR BEHIND IN ACHIEVING QUALITY EDUCATION

WITHOUT ADDITIONAL MEASURES, BY 2030:



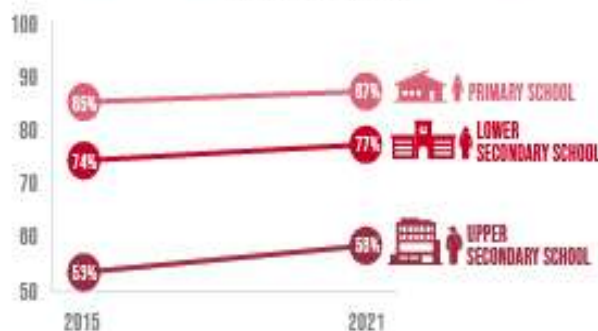
THE PANDEMIC

CAUSED LEARNING LOSSES IN **4 IN 5** OF **104 COUNTRIES** STUDIED



PRIMARY AND SECONDARY SCHOOL COMPLETION RATES ARE **RIISING**, BUT THE PACE IS SLOW AND UNEVEN

COMPLETION RATES



LOW- AND LOWER-MIDDLE-INCOME COUNTRIES FACE A NEARLY

\$100 BILLION

ANNUAL FINANCING GAP

TO REACH THEIR EDUCATION TARGETS



Mr. Ashok Kumar Rathour

Adhyaksh

Janbhagidari Samiti Govt. College Jaithari, Anuppur (M.P.)

Forward



Dear Esteemed Members of Government College Jaithari,

As the Adhyaksh of the Janbhagidari Samiti of Government College Jaithari, District Anuppur, Madhya Pradesh, it gives me immense pleasure to present this foreword to our comprehensive College Policy. Since our institution's establishment in 2012, we have been on a journey of growth, learning, and community engagement. This policy document marks another significant milestone in our college's development.

The Janbhagidari Samiti, or Public Participation Committee, plays a crucial role in bridging the gap between the college and the community. Our committee's vision aligns perfectly with the college's mission to provide quality education while fostering a sense of social responsibility among our students.

This College Policy is a testament to our collective efforts to create an institution that not only excels in academics but also prepares students to be responsible citizens. It encompasses various aspects of college life, from academic standards to community outreach programs, reflecting our commitment to holistic education.

I urge all stakeholders - students, faculty, staff, and community members - to embrace this policy wholeheartedly. It is through your active participation and adherence to these guidelines that we can truly realize the potential of our institution.

As we move forward, let us remember that the strength of our college lies in the spirit of 'Janbhagidari' - public participation. This policy is not just a document, but a shared vision for our college's future. Together, we can build an educational institution that serves as a beacon of knowledge and social progress in our region.

I look forward to your continued support and cooperation in implementing this policy and in furthering the growth of Government College Jaithari.

Sincerely,

**Mr. Ashok Kumar Rathour
Adhyaksh- Janbhagidari Samiti
Govt. College Jaithari
District Anuppur, (M.P.)**



Dr. Ramesh Singh Wate

Principal

Govt. College Jaithari, Anuppur (M.P.)

Forward



Dear Students, Faculty, and Staff,

As the Principal of Government College Jaithari, District Anuppur, Madhya Pradesh, it is my privilege to present our comprehensive College Policy. This document serves as a cornerstone for our institution, outlining our vision, mission, and the guiding principles that shape our academic environment.

Our college policy is designed to foster an atmosphere of academic excellence, personal growth, and social responsibility. It reflects our commitment to providing quality education while nurturing the diverse talents of our students. The policy encompasses various aspects of college life, including academic standards, code of conduct, extracurricular activities, and community engagement.

I encourage all members of our college community to familiarize themselves with this policy. It is not merely a set of rules, but a roadmap for our collective success. By adhering to these guidelines, we create a harmonious and productive learning environment that benefits everyone.

As we move forward, let us embrace these policies with enthusiasm and dedication. Together, we can build a college that not only imparts knowledge but also shapes responsible citizens who will contribute positively to society.

I look forward to working with all of you in upholding the high standards set forth in this policy and in continually striving for excellence in all our endeavors.

Sincerely,

Dr. Ramesh Singh Wate
Principal
Govt. College Jaithari
District-Anuppur (M.P.)

Govt. College Jaithari, Anuppur M.P.

Department of Higher Education M.P.

Plastic Ban Policy

Policy Statement:

At Government College Jaithari, Anuppur (M.P.), we are committed to promoting environmental sustainability and reducing plastic waste. This policy aims to implement a comprehensive plastic ban on campus to protect the environment and create a sustainable learning environment.

Scope and Definitions:

The plastic ban policy applies to all areas within the Government College Jaithari campus, including classrooms, administrative buildings, canteens, hostels, and outdoor spaces.

The policy includes a ban on single-use plastic bags, bottles, straws, cutlery, food containers, and any other disposable plastic items.

Timeline:

The plastic ban policy will be implemented in three phases:

Phase 1: Awareness and Preparation (July-September 2023): Raise awareness about the plastic ban policy through communication campaigns, educational workshops, and training sessions. Assess the current usage of plastic items on campus and identify alternative solutions.

Phase 2: Transition (October-December 2023): Introduce alternatives to plastic products, such as reusable bags, bottles, and utensils. Install water refill stations, recycling bins, and composting facilities across campus.

Phase 3: Full Implementation (January 2024 onwards): Strictly enforce the plastic ban policy, with disciplinary measures for non-compliance. Monitor and evaluate the effectiveness of the policy regularly.

Alternatives and Infrastructure:

Encourage students, faculty, and staff to use reusable bags, bottles, and utensils. Provide information about local vendors supplying eco-friendly alternatives.

Install water refill stations at convenient locations across the campus to promote the use of reusable water bottles.

Ensure an adequate number of recycling bins for different waste categories, clearly labelled and easily accessible. Implement a composting system for organic waste.

Communication and Education:

Launch a comprehensive communication campaign to inform the college community about the plastic ban policy. Utilize notice boards, social media platforms, college website, and email newsletters to spread the message.

Conduct workshops, seminars, and guest lectures to educate students, faculty, and staff about the environmental impact of plastic waste and the benefits of sustainable practices.

Engage student clubs, environmental committees, and local NGOs to organize awareness drives, clean-up campaigns, and competitions centered around sustainability.

Collaboration and Engagement:

Foster collaborations with local businesses, vendors, and suppliers to encourage them to adopt sustainable practices and provide eco-friendly alternatives.

Involve student organizations, clubs, and faculty members in the planning and implementation of the plastic ban policy. Encourage them to initiate sustainable initiatives and projects.

Enforcement and Monitoring:

Establish a system to enforce the plastic ban policy, including regular checks and inspections.

Develop a reporting mechanism for the college community to report non-compliance or suggest improvements.

Monitor the effectiveness of the policy through periodic audits and surveys. Assess the reduction in plastic usage and the overall impact on campus sustainability.

Partnerships and Suppliers:

Develop partnerships with local suppliers who prioritize eco-friendly products and packaging.

Provide a list of recommended suppliers offering sustainable alternatives to plastic products.

Continuous Improvement:

Regularly review and update the plastic ban policy based on feedback, emerging best practices, and advancements in sustainable solutions.

Encourage feedback from the college community to address any concerns or challenges. Maintain an open dialogue with students, faculty, staff, and local stakeholders to foster a culture of sustainability.

Government College Jaithari, Anuppur (M.P.) is dedicated to creating a plastic-free campus and promoting sustainable practices among its community members. By implementing this plastic ban policy, we can contribute to a cleaner and healthier environment for current.

Prepared By:- Smt. Rama Vishwakarma,

& Dr. Khushboo Khan

Verified By:- Shri Rajkumar Singh

**Coordinator IQAC
Govt. College Jaithari**

**Principal
Govt. College Jaithari
Anuppur (M.P.) 484330**